

**SEELEY COUNTY WATER DISTRICT
EST. 1966**



KEY STAFF & PROJECT PARTNERS

Seeley County Water District Board Members

- Leslie Hill *Board President*
- Donald Murphy *Vice President*
- Esteban Jaramillo *Board Member*
- Jason Grima *Board Member*
- Bianca Vasquez *Board Member*

Seeley County Water District Staff

- Miriam Rosales- *Administrative General Manager, Secretary to the Board*
- Amado Ramirez- *Operations Supervisor*
- Ashley Hernandez- *Administrative Asst.*
- Patricia Lopez- *Administrative Asst.*
- Tania Guillen- *Administrative Asst.*

County of Imperial

- Michael Kelly *IC County Representative for Seeley, CA*
- John Gay *Imperial County Representative*
- Eddie Cedenio *Imperial County Representative*
- Hector Perez *Imperial County Representative*
- Jorge Gomez *Imperial County Representative*
- Gilbert Rebollar *Imperial County Representative*

Kimley-Horn

- Randall Kopff *Project Manager*

Imperial County California Women for Agriculture

- Judy Tagg *Secretary*

Imperial Irrigation District

- JB Hamby *Board of Directors, Division 2*

Imperial County Farm Bureau

- Rachel Magos *Farming Bureau Representative*
- Andrew Leimgruber *Farming Bureau Representative*
- Jim Abatti *Farming Bureau Representative*
- Trevor Tagg *Farming Bureau Representative*

OVERVIEW OF PROCESS AND TIMELINE

- Provided by California Natural Resources Agency
- Grant Administrator-- Carolyn Bush



Greetings from Seeley,

Seeley is a small agricultural townsite near the Mexico border. The Robert Bates Memorial Park is centrally located in Seeley, California. Seeley is a small townsite home to a local post office, elementary school, and grocery store. Seeley County Water District is a special district that provides potable water and wastewater services. Seeley is considered a severely disadvantaged low-income community and unfortunately Bates Memorial Park is the only recreational area within walking distance available for its community members.

The Robert Bates Memorial Park is owned by Seeley County Water District. Bates Memorial Park currently consists of dirt surrounding the perimeter therefore, during the windy season dust is a major concern as well as the poor air quality that comes with it. Between the months of May and August Seeley's weather climate can reach temperatures between 100-117 degrees with some cases as high as 120 degrees. The greening phase of the Robert Bates Memorial Park is crucial and will assist in mitigating the heat in Seeley and allow the park to act as a cool-down area for the residents of Seeley during the summer season.

Seeley's residents care deeply about the future of Bates Memorial Park, and we understand the importance of having a safe recreational space for our residents. With the help of Seeley's residents, we were able to propose such renovations for a multi-use open space park. Seeley County Water District is currently in Phase II of renovating Bates Memorial Park which consists of a designated fitness area, park benches, and pet waste stations installed throughout the park.

With the help of the Urban Greening Grant phase III will consist of enhancing the current Bates Memorial Park by planting shade trees throughout the park, starting a community garden for its community members, and a shade structure for the current playground area.

BATES MEMORIAL PARK - OVERVIEW (PHASE III)

- Seeley CWD is proposing to construct their 3.90-acre public park. Phase three will consist of a new shading structure at current playground area , a community garden, and the planting of trees to help reduce urban heat islands.



REDUCING GHG EMISSIONS

- Reducing GHG Emissions
- Parks reduce harmful carbon pollution that is driving climate change, they protect people and infrastructure from increasingly severe storms, sea-level rise, heat waves and droughts.
- Trees in parks are estimated to remove 711,000 metric tons of air pollution annually and sequester more than 90 million metric tons of carbon
- Urban trees also filter particulate matter from automobiles and other vehicles, further cleaning the air

PROPOSED TREES (PHASE III)



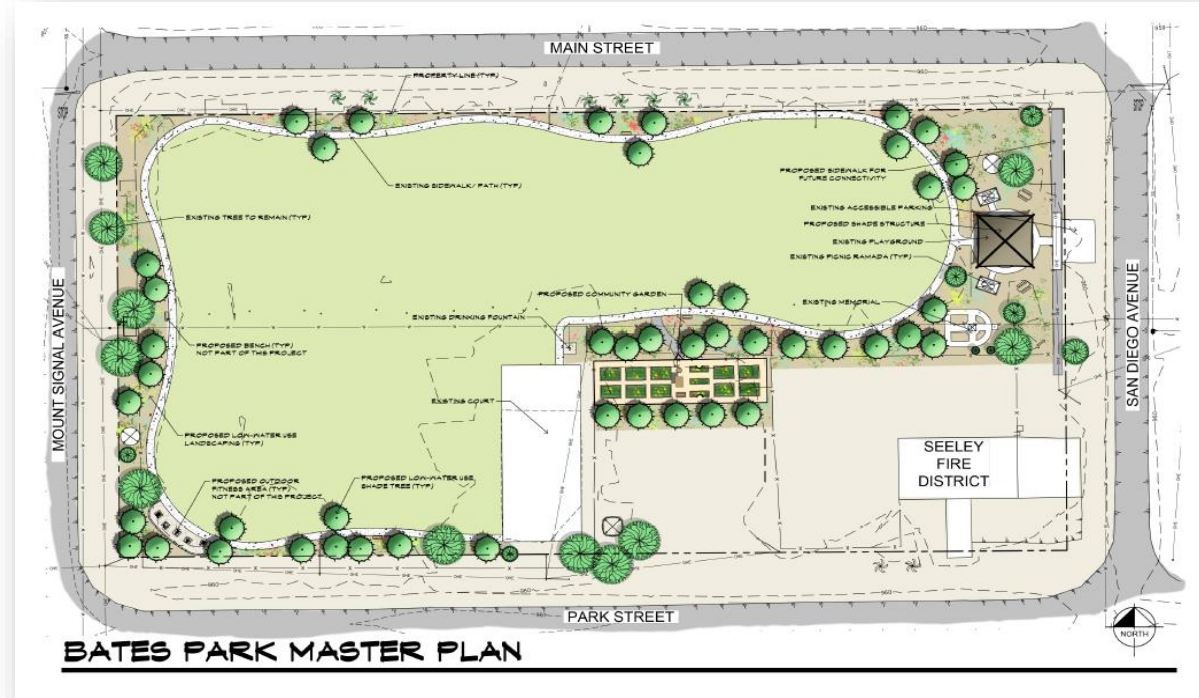
Thornless Palo Verde Tree



Evergreen Elm Tree (Chinese)



Sissoo Tree



BATES PARK MASTER PLAN

Design by Kimley-Horn

- Desert trees such as these being proposed tolerate harsh, hot, arid climates and still produce foliage. Growing suitable drought-tolerant trees will provide needed shade from the beating sun.
- SCWD intends on planting 47 trees at the Robert Bates Memorial Park

PROPOSED LANDSCAPING (PHASE III)

All plants are listed in the City of El Centro Water Efficient Landscaping Ordinance.

Water use classification of Landscape Species (WUCOLS IV) was used to determine water use.



BATES PARK MASTER PLAN

Design by Kimley-Horn

Fouquieria Splendens
Ocotillo



leucosceptrum spp
Texas Ranger



Oenothera beriandieri
Mexican Evening Primrose





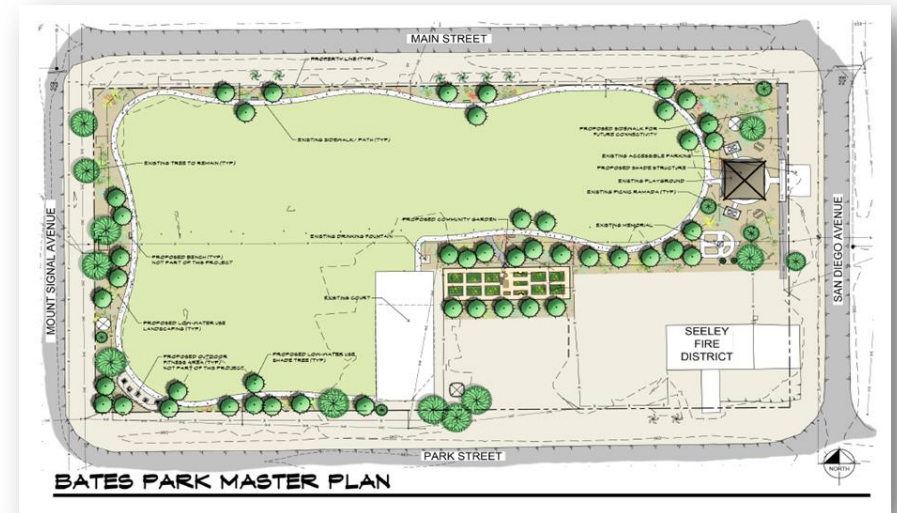
Zephyr is a home for formerly homeless veterans in San Diego, CA.



Zephyr's community garden was designed by Kimley-Horn who is planning to help SCWD with their community garden at Robert Bates Memorial Park.

PROPOSED COMMUNITY GARDEN (PHASE III). BENEFITS OF TREES AND VEGETATION

- According to the US Environmental Protection agency trees and other plants help cool the environment, making vegetation a simple and effective way to reduce urban heat islands. A heat island (structures, buildings, roads) result in daytime temperatures about 1-7 degrees higher in outlying areas and 2-5 degrees higher at night.
- Having trees and vegetation in urban environments benefits beyond just urban heat islands. This includes reduced energy use, improved air quality and lower greenhouse gas emissions, reduced pavement maintenance, and improved quality of life.



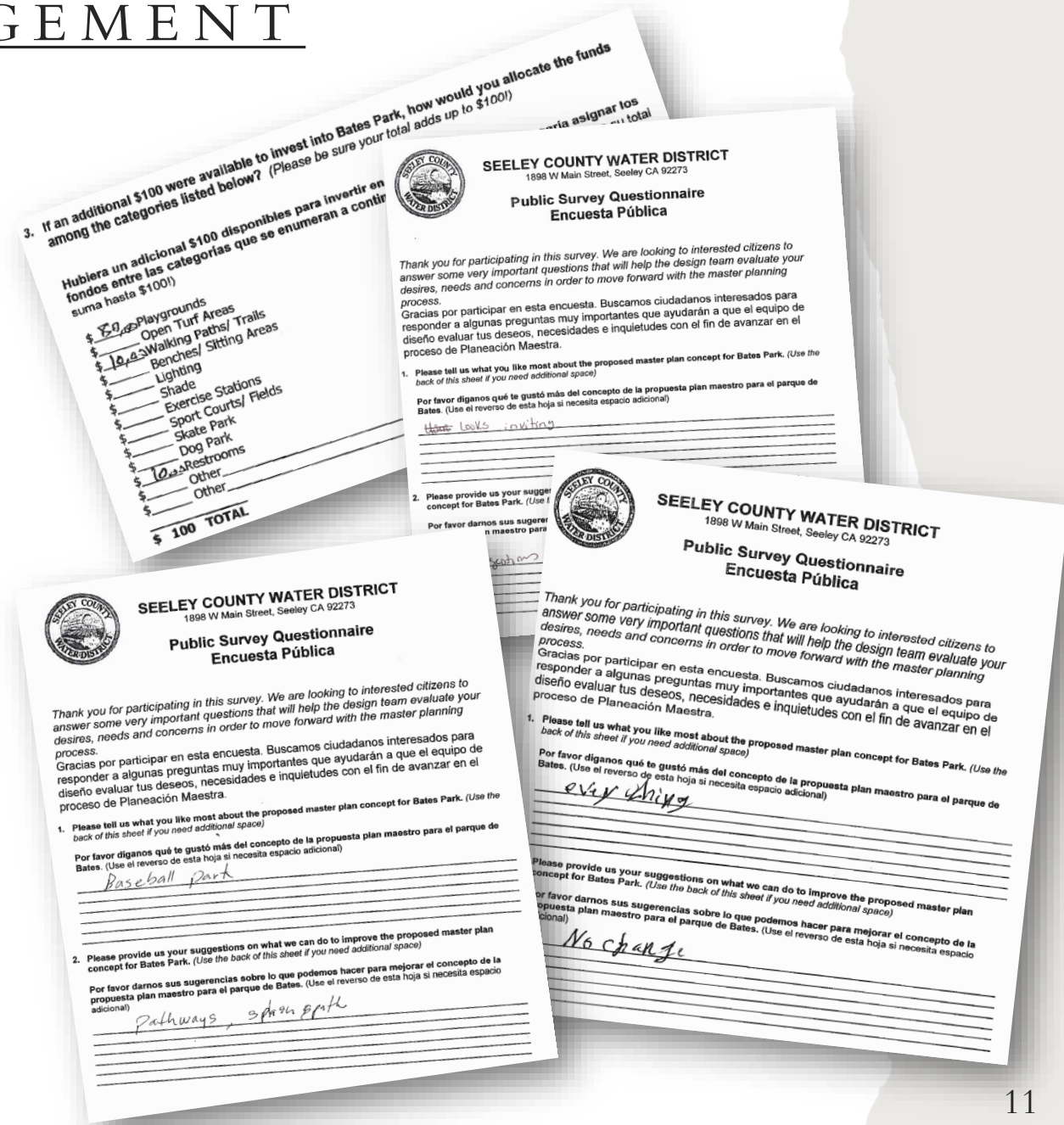
ECONOMIC, SOCIAL, AND HEALTH BENEFITS

- The Robert Bates Memorial Park would consist of 3.90 acres for the benefit and improvement of the community in economic, social and health areas. A park in our community will allow members to engage in free activity such as playing outside without the need to spend money. It will also provide space and equipment for community members to improve their health by going outside and possibly engaging in aerobic exercise. Local green spaces have correlated to a 25.6% increase in people getting active at least three times a week.
- According to the Imperial County Public Health Department, 80 percent of adults and 40 percent of children are obese or overweight in the Imperial Valley. Physical activity is directly associated with the prevention of obesity. The construction of the 3.90-acre park will encourage physical activity since it will provide beautiful scenery for the community to go to.
- In addition, it will have a social impact on our community by creating a safe gathering place for all people. The park will provide shade structures and picnic tables for community members to gather. This will provide a common space for individuals to gather and socialize. It will be accessible to all Seeley Community.

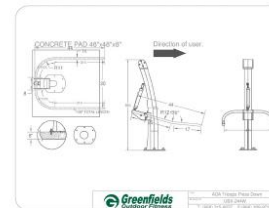
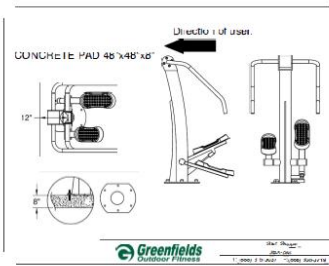
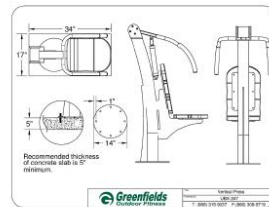
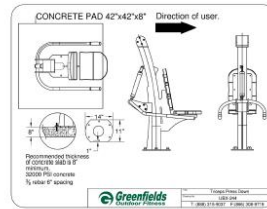
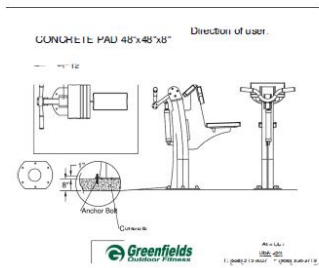


COMMUNITY ENGAGEMENT

In 2019, Seeley County Water District conducted a Public Survey Questionnaire. Our design team was able to take the feedback and design a master plan for Bates Memorial Park.



ROBERT BATES MEMORIAL PARK (CURRENTLY--PHASE II)



6- Arched Steel Benches



5- Pet Waste Bag Stations

Outdoor Fitness Equipment

ROBERT BATES MEMORIAL PARK (CURRENTLY--PHASE II)

IID Entity Funds will be used to replace/restore

- Soccer field nets
- Basketball nets
- Welcome sign
- Restoration/update of memorial

SITE PLANS



BATES PARK MASTER PLAN