



Seeley County Water District
1898 W. Main Street, PO Box 161
Seeley, California 92273

NOTICE OF DOCUMENT AVAILABILITY AND INTENT TO ADOPT A MITIGATED NEGATIVE DECLARATION

In accordance with the State CEQA Guidelines, notice is hereby given that the Seeley County Water District (District) is releasing an Initial Study and Proposed Mitigated Negative Declaration (IS/MND) for the District's Wastewater Treatment Plant Improvements project.

The proposed project would include upgrades and improvements to the Wastewater Treatment Plant (WWTP) to address violations of the facility's National Pollutant Discharge Elimination System (NPDES) permit for effluent discharged from the WWTP to the New River. The project would be located at 1898 W Main Street, Seeley, CA. Potentially significant environmental effects that were addressed in the Public Draft IS/MND include those affecting geology and soils, cultural resources, and tribal cultural resources. All of the potential significant environmental impacts were found to be avoided or result in less than significant impacts with the incorporation of mitigation measures. Reviewers should focus on the content and accuracy of the Draft IS/MND in discussing potential impacts upon the environment and the mitigation measures.

The IS/MND will be available for public review at the Seeley County Water District Administration Office, located at 1898 W Main Street, as well as online at <https://seeleywaterdistrict.ca.gov/>. A 30-day public review period will extend from April 15th, 2026 to May 15th, 2026. Comments and questions may be directed to the attention of Miriam Rosales, Seeley County Water District, 1898 W Main Street, Seeley, CA 92273, telephone (760)-352-6612. Persons responding are urged to submit their comments in writing. Written comments must be delivered no later than 5 p.m. on May 15th, 2026.

After the review period closes, the Seeley County Water District Board of Directors will consider a recommendation to adopt the IS/MND for the project during a regularly scheduled public meeting.

TO BE PUBLISHED: April 15, 2026

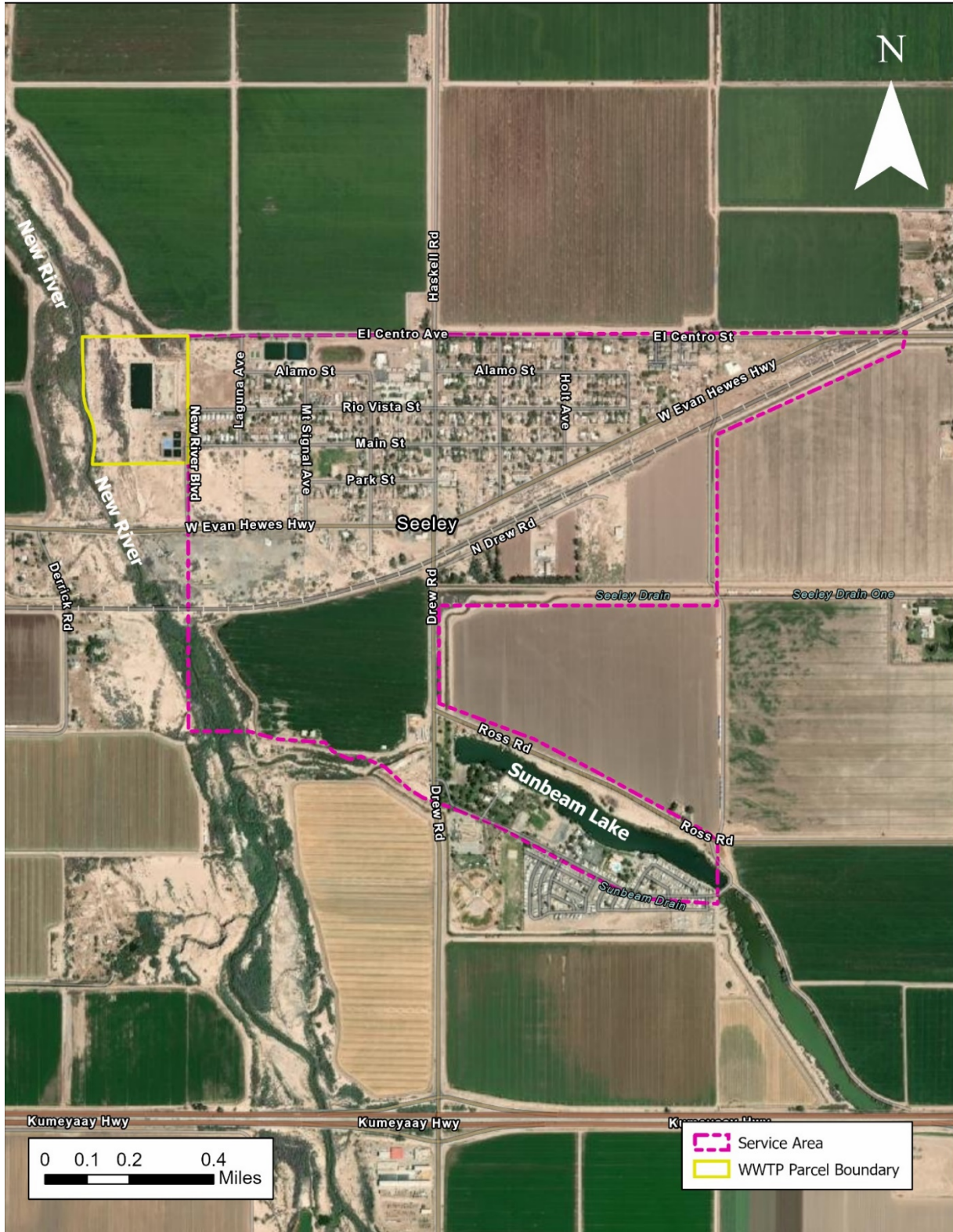
Project Location: 1898 W Main Street, Seeley, CA 92273

Project Description: The Seeley County Water District owns and operates the Wastewater Treatment Plant (WWTP). The District serves the community of Seeley, California, providing water and wastewater services within a 2.26-square-mile service

area. Collected wastewater is treated at the District's WWTP. The existing WWTP consists of a septage receiving facility, an influent lift station with coarse screen, primary treatment consisting of an aerated pond treatment system that includes pre-aeration and aeration ponds, effluent pumping, secondary treatment that consists of pressure sand filters, and an ultraviolet (UV) disinfection system. The existing WWTP is designed for a treatment capacity of 0.25 million gallons per day (MGD) with current average annual daily flows of 0.11 MGD.

The existing WWTP is in good condition but is incapable of handling the more concentrated wastewater stream that has been created over the years from conservation measures that lower water consumption throughout the service area. This has led to failure to comply with effluent requirements and notices of noncompliance including an Administrative Civil Liability Complaint with Mandatory Minimum Penalties (MMPs) for effluent violations and a Time Schedule Order. The goal of the project is to improve treatment performance to conform to resolve recent effluent violations and allow the WWTP to adjust operations to accommodate future changes in effluent limits.

The proposed upgrades of the WWTP will result in a treated flow capacity of 0.15 MGD, lower than the facility's current design capacity and permitted effluent flow limit but still capable of accommodating increases in flow associated with future growth in the service area. Project upgrades primarily consist of upgrading the WWTP's secondary treatment system from a pressure sand filter system to a membrane bioreactor (MBR) system as well as several on-site improvements.



Project Site Location and Service Area Boundary Map